



PantOs DG Plus

BLUEX



PantOs DG Plus is built around a new high resolution and low noise imaging sensor for clear and sharp radiographs taking advantage of the features of the OrisWin DG Suite, the application program for image processing and storage.





Cephalometric radiology is fully computerized for best results. To the combined movements of the rotation arm and of the digital sensor associated with proper radiation beam provides selective enhancement of landmarks and soft tissues for outstanding radiograph for orthodontic application.

PantOs DG Plus

SIMPLY DIGITAL



Flexibility

The use of a removable digital sensor, which can be alternatively operated in panoramic or cephalometric mode, makes the system efficient allowing for wide flexibility of use at the lowest possible cost.

The system comes complete with OrisWin DG Suite, a dental imaging package with networking capabilities, covering extra-oral and intra-oral radiology but open to other imaging devices. Digital imaging processing includes features such as invert, color, contrast, brightness, gamma, sharpen, median, and measurement. The built in filtering options and image manipulation tools assure optimized diagnostic images with enhanced details, consistently.

Simply digital

The unit uses a CCD sensor driven for maximum definition of panoramic and cephalometric images. This is done using a constant potential x-ray generator and a tube with a small focal spot which guarantee superb image quality that will remain constant over time.

The system is easy to use with automatic image acquisition, quick processing and display on the computer screen so as to highlight the most important details.

Operations

The symbols on the control panel are intuitive. There are seven panoramic and three cephalometric programs provided and the system can deal with four sizes of patients: (P1) panoramic examination with constant vertical magnification of the dental arch, (P2) reduced dose panoramic imaging for children, (P3) left side dentition, (P4) right side dentition, (P5) anterior dentition, (P6) lateral temporo-mandibular joint (TMJ) in normal occlusion and fully open that can be carried out twice with no interval and (P7) frontal view of maxillary sinuses, (P8) Antero Posterior view (P9) Latero Lateral projection (with soft tissue filtering), (P10) Carpus, with hand support. Submento Vertex Projections can be done in AP mode.

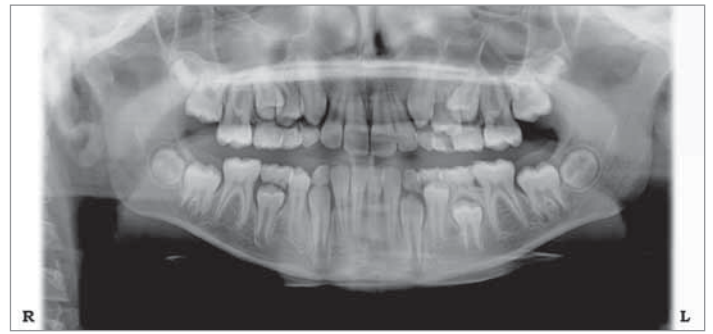
Use

The system is both compact and comfortable where the patient faces a mirror in the traditional fashion. Alignment is carried out quickly on a static patient and the use of three laser beams ensures perfect centering. Overjet from mandibular retrusion or protrusion is rectified with motorised horizontal translation of the carriage. Adjustable temporo-mandibular resting bars for added stability are available on request.

The carriage is locked in position by an electromagnetic brake and can be moved vertically to such an extent that patients in wheelchairs can be easily accommodated. A free-standing base unit is available for when wall fixing is not possible.



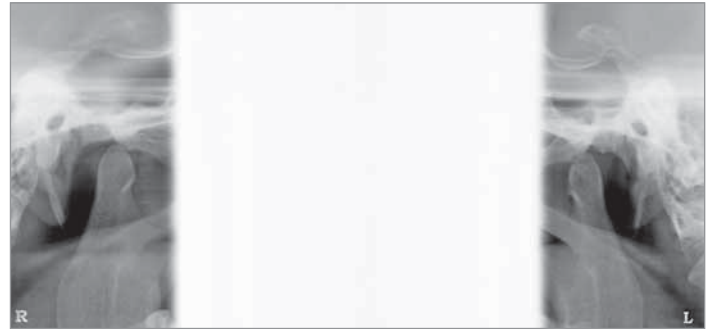
P1 - Adult standard with constant magnification of dental arch



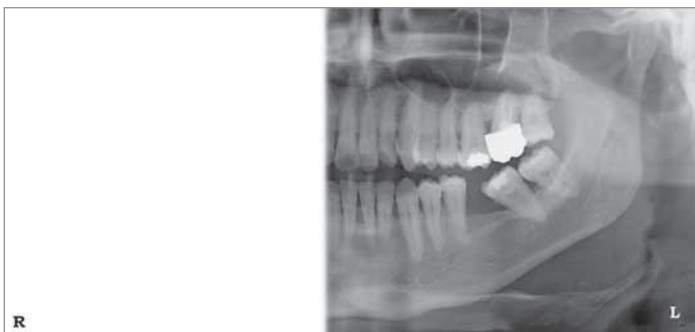
P2 - Child panoramic



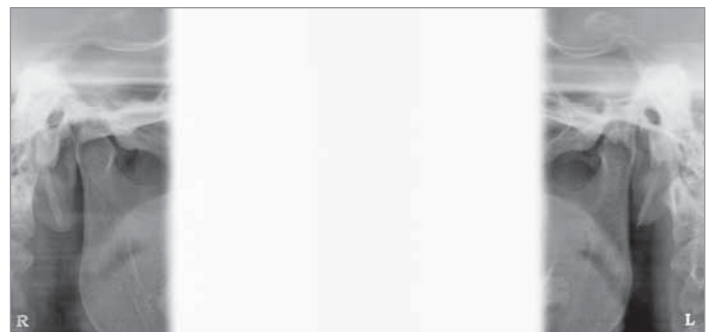
P4 - Right-side dentition



P6 - TMJ lateral occlusion fully open



P3 - Left-side dentition



P6 - TMJ lateral normal occlusion



P5 - Anterior dentition



P7 - Frontal view of maxillary sinuses

Radiology

The constant potential x-ray generator is an essential element in the imaging chain. The fact that anode voltage can be modulated as desired increases the penetration factor for dense structures as well as the visibility of soft tissues in Ceph mode.

The small focal spot ensures acquisition of the maximum definition generated. The software and the device that protect the x-ray tube from heat damage, yet minimize cooling time, guarantee excellent operating efficiency.

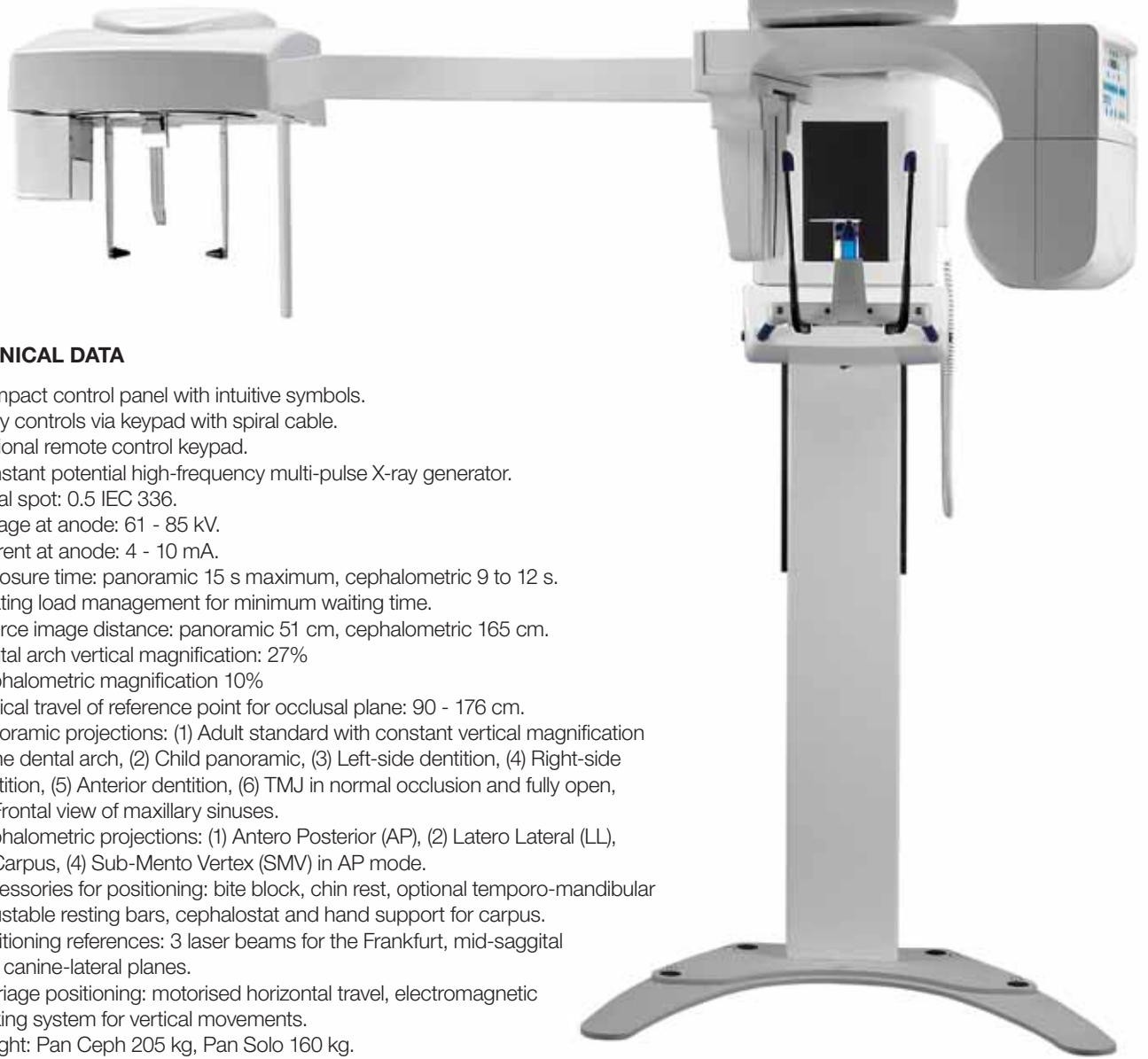


The available PantOs DG Plus system configurations comprise two versions, the Pan Ceph featuring panoramic and cephalometric radiology and the Pan Solo limited to panoramic applications, with possible future upgrade in field to the Pan Ceph version.



The Italian Blue X Imaging company was founded in 2000 and is now part of Sirona, the dental company. Blue X Imaging has a wealth of experience in manufacturing dental x-ray systems.

The **IntraOs 70** and **IntraOs DG** intraoral x-ray systems and the panoramic and cephalometric **PantOs 16 xp** e **PantOs DG xp** systems are well-known and appreciated the world over.



TECHNICAL DATA

- Compact control panel with intuitive symbols.
- X-ray controls via keypad with spiral cable.
- Optional remote control keypad.
- Constant potential high-frequency multi-pulse X-ray generator.
- Focal spot: 0.5 IEC 336.
- Voltage at anode: 61 - 85 kV.
- Current at anode: 4 - 10 mA.
- Exposure time: panoramic 15 s maximum, cephalometric 9 to 12 s.
- Heating load management for minimum waiting time.
- Source image distance: panoramic 51 cm, cephalometric 165 cm.
- Dental arch vertical magnification: 27%
- Cephalometric magnification 10%
- Vertical travel of reference point for occlusal plane: 90 - 176 cm.
- Panoramic projections: (1) Adult standard with constant vertical magnification of the dental arch, (2) Child panoramic, (3) Left-side dentition, (4) Right-side dentition, (5) Anterior dentition, (6) TMJ in normal occlusion and fully open, (7) Frontal view of maxillary sinuses.
- Cephalometric projections: (1) Antero Posterior (AP), (2) Latero Lateral (LL), (3) Carpus, (4) Sub-Mento Vertex (SMV) in AP mode.
- Accessories for positioning: bite block, chin rest, optional temporo-mandibular adjustable resting bars, cephalostat and hand support for carpus.
- Positioning references: 3 laser beams for the Frankfurt, mid-sagittal and canine-lateral planes.
- Carriage positioning: motorised horizontal travel, electromagnetic locking system for vertical movements.
- Weight: Pan Ceph 205 kg, Pan Solo 160 kg.
- Room size: Minimum height 220 cm, maximum height 227 cm, depth 110 cm, width 240 cm for Pan Ceph 140 for pan Solo.
- Free-standing base unit (optional).

Digitale receiver

- Removable CCD Sensor
- Image height 22 cm
- Spatial resolution > 5 line pairs per mm
- Acquisition dynamics 12 levels
- Imaging area of 15 x 30 cm on Panoramic and 22 x 24 cm on Ceph
- USB interface

BLUXX

Blue X Imaging Srl

Via Idiomi 1/8-33 • 20090 Assago • Italia
Tel. +39 02 45712171 • Fax +39 02 45703385
E-mail: bluex@bluex.it • www.bluex.it

GB